

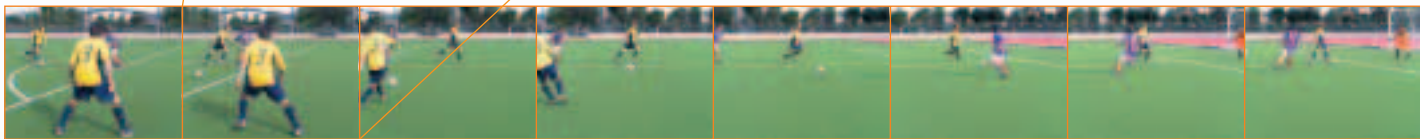
Advanced Movie

Motion, Sound, So Real



Long Movies with MPEG-4 in VGA

Now capture incredibly long movies with the high image quality, high-compression MPEG-4 format. With its VGA size (640x480 pixels) image recorded at 30 frames per second, you can produce smooth, beautiful movies worthy of watching on a TV screen (A/V cable included). Make it more real with its sound recording capability.



Popular Movie Editing Software Included

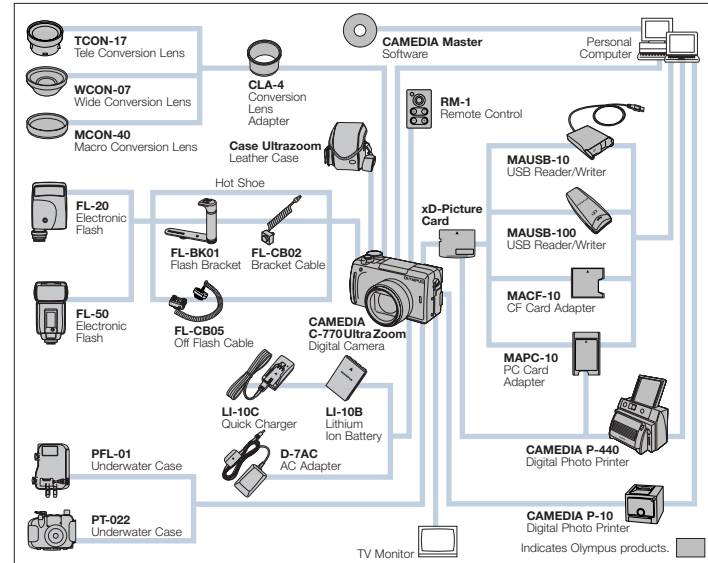
Beginners and experts alike will enjoy high-performance editing of MPEG-4 movies with the easy-to-use Ulead VideoStudio 7 SE Basic software that comes with the camera. Get creative by adding special filters, sound, titles, and more.



Motion Frame into Still Image

You can isolate that right moment in the movie as a still image. It's also possible to view nine movie frames in index layout on the camera's monitor, then save them as a still image. You can also trim the beginning or end of the movie.

System Chart



Optional Accessories

- | | |
|--|---|
| TCOON-17 Tele Conversion Lens Magnifies the focal length by 1.7 times. | WCON-07 Wide Conversion Lens Shortens the focal length by 0.7 times. |
| MCON-40 Macro Conversion Lens Enables you to shoot closer to the subject. | CLA-4 Conversion Lens Adapter Required for attaching TCOON-17, WCON-07, or MCON-40 to the camera. |
| FL-20 Electronic Flash Compact and high-power flash with GN 20. | FL-50 Electronic Flash High-power flash with GN 50 for TELE, 28 for WIDE. |
| FL-BK01 Flash Bracket For connecting the FL-20/FL-50 Electronic Flash to the camera. | FL-CB02 Bracket Cable For connecting the FL-BK01 Flash Bracket to the camera's hot shoe. |
| FL-CB05 Off Flash Cable For connecting the FL-20/FL-50 Electronic Flash to the camera's hot shoe. | D-7AC AC Adapter For extended use of the camera. |
| LI-10B Lithium Ion Battery Rechargeable lithium ion battery. | LI-10C Quick Charger Battery charger for LI-10B Lithium Ion Battery. |
| xD-Picture Card Ultra-compact and removable memory card for storage image data. (16, 32, 64, 128, 256, 512MB) | MAUSB-10 USB Reader/Writer For easy and fast data transfer from an xD-Picture Card/SmartMedia card to a PC/Macintosh with a USB port. |
| MAUSB-100 USB Reader/Writer For high-speed data transfer from an xD-Picture Card to a PC/Macintosh with USB 2.0 interface. | MACF-10 CF Card Adapter For using an xD-Picture Card with digital cameras or computers with a CF card slot. |
| MAPC-10 PC Card Adapter For easy and fast data transfer from an xD-Picture Card/SmartMedia card to a PC/Macintosh with a PC card slot. | RM-1 Remote Control For using a variety of functions from a distance. |
| P-440 Digital Photo Printer High-image quality, high-speed printer. Dye-sublimation printing. | P-10 Digital Photo Printer PictBridge compatible printer for direct printing without a computer. Dye-sublimation printing. |
| PT-022 Underwater Case Protective case for CAMELIA C-770 Ultra Zoom. (Camera sold separately.) | PFL-01 Underwater Case Protective case for FL-20 Electronic Flash. (Flash sold separately.) |
| Case Ultrazoom Leather Case Camera case for CAMELIA C-770 Ultra Zoom. Protects the camera from damage. | |

CAMELIA C-770 Ultra Zoom Digital Camera Specifications

| | |
|---|--|
| Recording system | Still image: TIFF, JPEG with DCF (Design rule for Camera File system), Exif 2.2, PRINT Image Matching II, DPOF (Digital Print Order Format) support. Movie: MPEG-4, QuickTime Motion JPEG Audio: AAC (Advanced Audio Coding), Wave format support |
| Memory | xD-Picture Card (16, 32, 64, 128, 256, 512MB) |
| No. of effective pixels | 4.0 million pixel |
| Image pickup element | 1/2.5 inch CCD solid-state image pickup device, total 4.2 million pixel |
| Recording image sizes & approx. no. of storable frames (When using a 128MB xD-Picture Card) | 2288x1712 pixels - TIFF: 11, SHQ: 46, HQ: 130 2288x1520 pixels (3:2) - TIFF: 12, SHQ: 50, HQ: 145 2048x1536 pixels - TIFF: 13, SHQ: 70, HQ: 162 TIFF: non-compressed - TIFF: 22, SQ1 (High): 90, SQ1 (Normal): 257 SHQ: Super High Quality - TIFF: 35, SQ1 (High): 140, SQ1 (Normal): 399 HQ: High Quality - TIFF: 54, SQ2 (High): 215, SQ2 (Normal): 614 SQ1: Standard Quality-1 - TIFF: 135, SQ2 (High): 532, SQ2 (Normal): 1330 SQ2: Standard Quality-2 - TIFF: 325, SQ2 (High): 1664, SQ2 (Normal): 4176 * 3:2 is the same vertical/horizontal ratio as 35mm film. |
| Lens | Olympus lens 6.3-63mm, F2.8-3.7, 11 elements in 7 groups (equivalent to 38-380mm on a 35mm camera) |
| Optical zoom | 1-10X (up to 40X with 4X Digital Zoom)** |
| Photometric system | Digital ESP light metering, Spot light metering |
| Sensitivity | Auto, and settings equivalent to approx. ISO64, 100, 200, 400 |
| Exposure control | Programmed auto, Aperture-priority and Shutter-priority exposure modes Aperture-priority: F2.8-8 (Wide), F3.7-8 (Tele) Shutter-priority: 16-1/1,000 sec. (used with mechanical shutter) Manual exposure mode: 16-1/1,000 sec. Scene Programmes: Portrait, Sports, Landscape Portrait, Landscape, Night Scene, Self Portrait AE lock: available except with Manual exposure mode Compensation: within ±2EV in 1/3EV steps Auto bracketing: 3 or 5 frames within ±2EV in 1/3, 2/3, 1EV steps Histogram available |
| Focusing | TTL system ESP/spot/ultra-time autofocus: Normal mode: 60cm - (Wide), 2.0m - (Tele) Macro mode: 7-60cm (Wide), 1-2-2.0m (Tele) Super Macro mode: up to 3cm (focal length fixed) Manual focus: 7cm - AF target area shift possible |
| White balance | ESP full auto TTL, One-Touch, Preset (daylight, overcast, tungsten, 3 types of fluorescent light) Compensation: 15 levels |
| Sequence mode | High speed: up to 5 pictures at 2.1 frames per sec. in HQ mode Normal speed: up to 24 pictures at 1.6 frames per sec. in HQ mode |
| Movie recording (When using a 128MB xD-Picture Card) | MPEG-4 recording (30 frames per sec.) MPEG-4 (640x480 pixels): approx. 6 min. 43 sec. w/o sound, 6 min. 26 sec. with sound QuickTime Motion JPEG recording (15 frames per sec.) SHQ (640x480 pixels): approx. 2 min. 23 sec. w/o sound, 2 min. 23 sec. with sound HQ (320x240 pixels): approx. 6 min. 43 sec. w/o sound, 6 min. 26 sec. with sound SQ (160x120 pixels): approx. 29 min. 31 sec. w/o sound, 26 min. 1 sec. with sound |
| Image adjustment | Sharpness ±5, Contrast ±5, Saturation ±5 |
| Special functions | 2-in-1 Images, Black & White, Sepia, White Board, Black Board, Panorama** |
| Image editing | Resize, Trimming |
| Viewfinder | 0.44 inch TFT colour EVF; approx. 240,000 pixels |
| LCD monitor | 4.5cm low-temperature polysilicon TFT colour LCD display; approx. 118,000 pixels |
| Still image playback | Single Frame, Index (4, 9, 16 frames), Slideshow, Close-Up (up to 4X), Rotation (-90°, 0°, 90°), Histogram, sound playback possible |
| Movie playback | Normal, Frame-By-Frame, sound playback possible |
| Flash working range | Wide: Approx. 0.3-4.5m/Tele: Approx. 1.2-5.2m (ISO100) |
| Flash modes | Auto (automatic flash activation in low light and backlight), Red-Eye Reduction, Off (no flash), Fill-in (forced activation), Slow Synchronisation, Slow Synchronisation + Red-Eye Reduction Flash intensity control: within ±2EV in 1/3EV steps |
| Selftimer | Electronic selftimer with 12-sec. delay |
| External connectors | Hot shoe, DC-IN jack, USB ver 2.0/ver 1.1 connector (Full Speed, storage class)**, AV output connector |
| PictBridge | Compatible |
| Menu language options | English, French, German, Spanish, Italian, Russian, Portuguese, Japanese |
| Calendar system | Up to 2099, recorded with picture data simultaneously |
| Power supply | Exclusive lithium ion battery, optional AC adapter |
| Dimensions | 104.5 (W) x 60 (H) x 68.5 (D) mm (excluding protruding parts) |
| Weight | 280g (without batteries/card) |

* Using a tripod is recommended during super-telephoto shooting.
** Panorama is available with an Olympus version of the xD-Picture Card and CAMELIA Master software.
** OS: Windows 98 or later/Mac OS 9.0 or higher
- QuickTime is a trademark of Apple Computer, Inc.
- All other company and product names are registered trademarks and/or trademarks of their respective owners.
- The pictures in this catalogue of the LCD and PC monitors and the print samples are simulated.
- Specifications and appearances are subject to change without any notice or obligation on the part of the manufacturer.

CAMELIA Master Pro Olympus CAMELIA Master Pro Software

The easy-to-use software which accompanies your digital photography experience:
• Browse your images, create slideshows, convert slideshows to screensavers or movies, create HTML albums, edit your movies, rotate movies...
• All this and more with a user interface that minimises mistakes.
• For Windows and Macintosh



OLYMPUS

Your Vision, Our Future

Zoom Digital Compact Camera

CAMELIA

C-770 Ultra Zoom

NEW

Get Both Ultra Zoom & MPEG-4 Movies



1x

10x

40x

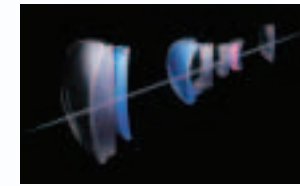


Ultra Zoom

Jump Right into the Action

Superior-Performance 10X Optical Zoom Lens & 40X Zoom with Digital Zoom

The bright F2.8-3.7, 6.3-63mm (38-380mm on a 35mm camera) 10X optical ultra zoom lens is contained in an ultra-compact metal body. To produce images with beautifully precise colour and sharpness, the zoom lens includes one ED (Extra-low Dispersion) lens to reduce chromatic aberration and two high-index, low-dispersion glass lenses to minimise chromatic and spherical aberration and provide higher contrast. Moreover, the advanced anti-blur programme adjusts the shutter speed, ISO sensitivity, and more, to prevent image blurring caused from camera shake. With the Super Zoom, you can turn a 10X telephoto picture with 4 million pixel into a 14X telephoto picture with 2 million pixel. Plus with the 4X Digital Zoom*, you can enjoy breathtaking 40X super-telephoto shooting (1520mm on a 35mm camera).



Lens Configuration
 ■ High-Index Low-Dispersion Glass Lens
 ■ ED Lens

* Images may be grainy when using the Digital Zoom.



1x
6.3mm (38mm)



21.6mm (130mm)



10x
63mm (380mm)



40x
With Digital Zoom
63mm with 4X Digital Zoom (1520mm)
() on a 35mm camera



4.0 Million Pixel & TruePic TURBO Image Processor



For more powerful telephotography, a huge 4.0 effective million pixel gives your photos sparkling richness and clarity. Image size can be selected from 2288x1712 pixels to 640x480 pixels. For crystal-clear large prints, the Enlarge Size setting can enhance image size to 3200x2400 pixels.

The advanced image processing engine, TruePic TURBO, provides realistic colour reproduction and smooth gradations under any lighting condition, while assuring a clear image by optimising sharpness and minimising noise. It also allows short image processing time, data reading time, and playback time.



14.8mm (89mm on a 35mm camera), f3.2, 1/100 sec., 2288x1712 pixels, SHQ

Macro & Super Macro Modes

You can shoot with the camera as close to the subject as 7cm in Macro mode, or even 3cm in Super Macro mode. This allows incredible close-ups of flowers, insects, and more.



With Super Macro Mode

A Variety of Shooting Modes

In addition to full auto, other shooting modes include P & A/S/M Exposure, versatile Scene Programme, and My Mode. You can quickly switch between shooting modes with the Mode Dial.

Full Auto: The camera shoots beautiful pictures automatically. All you have to do is push the shutter button.

P & A/S/M: Programme AE, Aperture Priority AE, Shutter Priority AE, and Manual let you choose how exposure is controlled.

My Mode: You can create up to 4 personal combinations of settings for quicker shooting the way you like.

Scene Programme: Portrait, Sports, Landscape Portrait, Landscape, Night Scene, and Self Portrait modes let you shoot superb pictures customised for the situation.



Portrait

Portrait-style images of people against a blurred background. Skin tones are reproduced clearly and naturally.



Sports

Action moments without blur, using a high-speed shutter.



Landscape Portrait

Both the foreground and background are beautifully in focus. Good for shooting people in front of landscapes.



Landscape

Sharp pictures of sweeping landscapes. Especially blues and greens are rendered vividly.



Night Scene

A slower shutter speed than normal captures the scattered lights of night scenes distinctly.
 * A tripod is recommended.

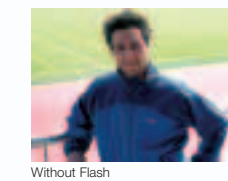


Self Portrait

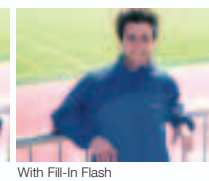
Quality photos of yourself while holding the camera. Focus locks on you and complexions appear natural.

Built-in Flash & Hot Shoe for External Flashes

The built-in Twin Flash extends shooting opportunities with its powerful output. Flash modes include Auto, Red-Eye Reduction, Fill-In, Flash Off, 1st / 2nd Curtain Slow Synchronisation, and Slow Synchronisation + Red-Eye Reduction. Flash intensity control is available in 1/3EV stops within ±2EV. The camera is equipped with a hot shoe for connecting an external flash. The optional FL-50 or FL-20 Electronic Flash gives you even greater control over flash output.



Without Flash



With Fill-In Flash



C-770 Ultra Zoom with FL-20 Attached

Large LCD Monitor & Various Playback Functions Including Histogram

The big 4.5cm LCD monitor is easy-to-see and its 100% field-of-view allows precise framing. An index display and close-up display make it easy to quickly search and closely inspect images. You can check the brightness and contrast of the image with its histogram display.



xD-Picture Card & Panorama Function



xD-Picture Card

Images are saved to an ultra-compact xD-Picture Card, up to a huge 512MB in capacity. You can turn pictures taken with Olympus versions of this card into panoramas on your computer using the included utility software (CAMELIA Master). A 128MB xD-Picture Card is included.

USB AutoConnect

Simply connect the camera to your computer with the included USB cable, then transfer your images.

Useful Optional Accessories

Conversion Lenses for More Creativity

The TCON-17 Tele Conversion Lens* gives you even greater telephoto power. The WCON-07 Wide Conversion Lens* lets you fit more into your picture through a wider angle of view, while the MCON-40 Macro Conversion Lens* allows you extra-detailed close-ups.

* The CLA-4 Conversion Lens Adapter is required for attachment.



TCON-17



WCON-07



MCON-40

Superior Printers for Superb Pictures

Enjoy high image quality and fast printing with Olympus dye-sublimation printers. The P-440 prints up to A4 size. The P-10 is PictBridge compatible, so you can enjoy direct printing without a computer by connecting it to the PictBridge compatible C-770 Ultra Zoom with a USB cable.



CAMELIA P-440



CAMELIA P-10 and C-770 Ultra Zoom



Fun Digital Photo Managing Software

Have fun browsing, organising, and editing images on your computer with the easy-to-use and quick-responding CAMELIA Master Pro software. Create HTML albums and use print settings for calendars, postcards, and more. The CAMELIA Master software included in the camera package is the simplified version.

Underwater Cases for Divers

Take stunning underwater photos with an array of Olympus housings for cameras and accessories, which are pressure resistant to a depth of 40m.



PT-022 Underwater Case for C-770 Ultra Zoom (Camera Sold Separately)

Durable Camera Case

A leather case (Case Ultrazoom) can help protect the camera from damage.



Case Ultrazoom

Small and Mighty



All the sample shots in this catalogue were taken with the CAMELIA C-770 Ultra Zoom.